

PLANT LEGEND

- **CONIFER, FULL CANOPY, SUN/SHADE (12)**
 INCENSE CEDAR (*CALOCEDRUS DECURRENS*),
 PORT ORTFORD CEDAR (*CHAMAECYPARIS LAWSONIANA*)
 DOUGLAS FIR (*PSEUDOTSUGA MENZIESII*)
 SERBIAN SPRUCE (*PICEA OMORIKA*)
 SHORE PINE (*PINUS CONTORTA*)
 RED FIR (*ABIES MAGNIFICA*)

- **CONIFER, TALL THIN FORMAL SUN (6)**
 ITALIAN CYPRESS (*CUPRESSUS SEMPERVIRENS*, TINY TOWER)
 HINOKI CYPRESS (*CHAMAECYPARIS OBTUSA*)

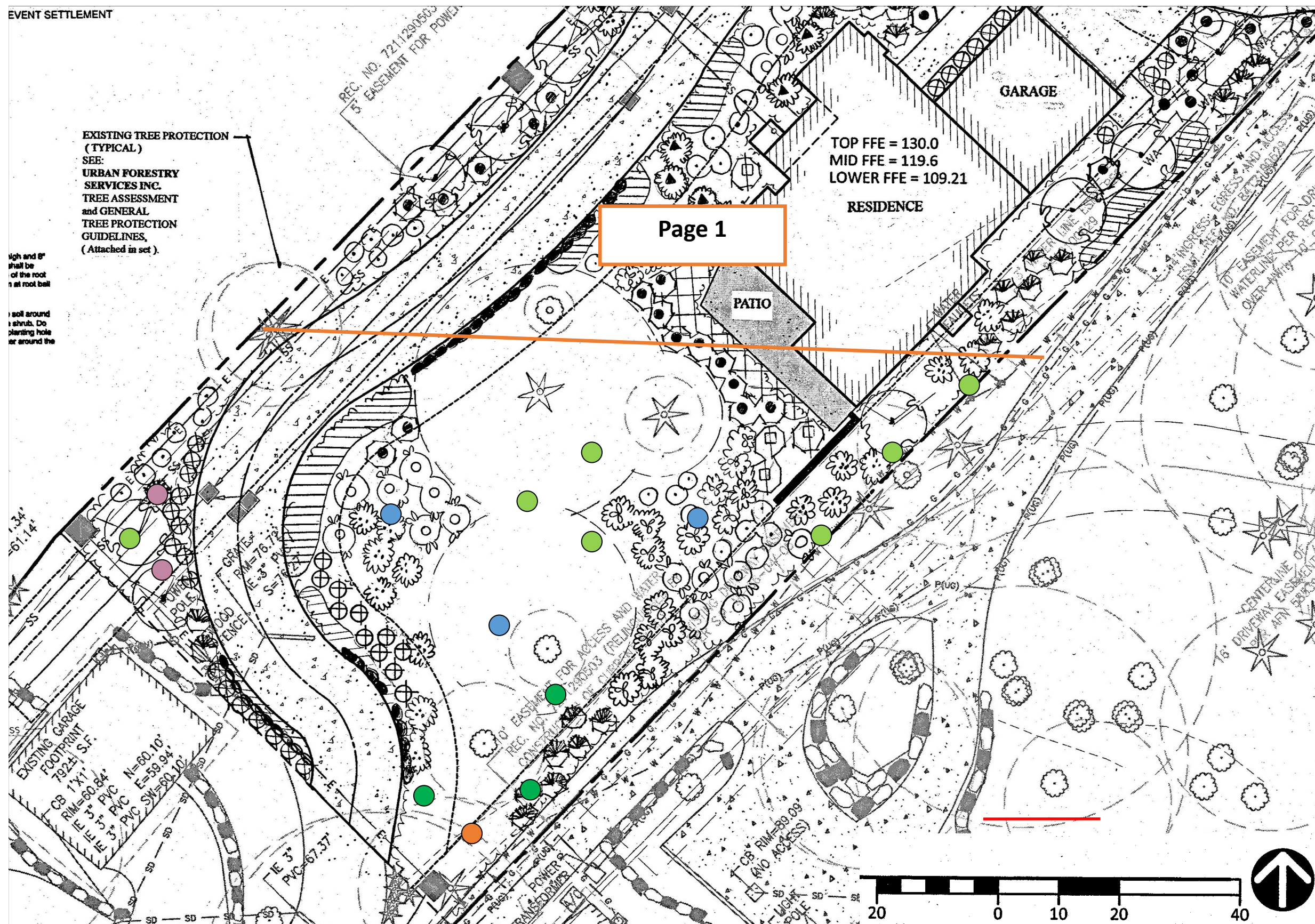
- **DECIDUOUS, SHORT < 30 FT, SUN/SHADE (19)**
 PACIFIC DOGWOOD, (*CORNUS NUTALII*)
 FLOWERING DOGWOOD, (*CORNUS* spp)
 GOLDEN RAINDROP CRABAPPLE (*MALUS FUSCA*)
 CASCARA (*RHAMNUS PURSHIANA*)
 DOUGLAS HAWTHORN (*CRATAGUS DOUGLASII*)

- **DECIDUOUS, TALL > 40 FT SUN/SHADE (8) RED CUTLEAF RED ALDER (*ALNUS RUBRA* 'CUTLEAF')**
 DOUGLAS MAPLE (*ACER GLABRUM*)
 PACIFIC SUNSET MAPLE (*ACER* 'WARRENRED')
 OREGON ASH (*FRAXINUS LATIFOLIA*)
 OREGON OAK (*QUERCUS GARRYANA*)

- **CONIFER, SLOW GROWING/SHORT (5)**
 MOUNTAIN HEMLOCK (*TSUGA MERTENSIANA*)
 PACIFIC YEW (*TAXUS BREVIFOLIA*)
 WESTERN JUNIPER (*JUNIPERUS OCCIDENTALIS*)
 KOREAN FIR (*ABIES KOREANA* 'SILBERLOCKE')

- **LANDSCAPE TREE, TALL, 40FT FULL CANOPY (4)**
 JAPANESE MAPLE (*ACER PALMATUM*)

- **LANDSCAPE TREE THIN, SUN/SHADE (3-5)**
 ALASKAN YELLOW CEDAR (*CUPRESSUS NOOT-KANTENSES* GREEN POINT, VANDENAKKER)
 GIAN T WEEPING SEQUOIA (*SEQUIOIDENDRON GIGANTEUM PENDULA*)



EXISTING TREE PROTECTION (TYPICAL)
 SEE:
URBAN FORESTRY SERVICES INC.
TREE ASSESSMENT and GENERAL TREE PROTECTION GUIDELINES.
 (Attached in set).

High and 8" shall be of the root n at root ball
 soil around shrubs. Do planting hole or around the

Page 1

TOP FFE = 130.0
 MID FFE = 119.6
 LOWER FFE = 109.21

GARAGE

RESIDENCE

PATIO

PLANT LEGEND

- **CONIFER, FULL CANOPY, SUN/SHADE (12)**
 INCENSE CEDAR (*CALOCEDRUS DECURRENS*),
 PORT ORTFORD CEDAR (*CHAMAECYPARIS LAWSONIANA*)
 DOUGLAS FIR (*PSEUDOTSUGA MENZIESII*)
 SERBIAN SPRUCE (*PICEA OMORIKA*)
 SHORE PINE (*PINUS CONTORTA*)
 RED FIR (*ABIES MAGNIFICA*)
- **CONIFER, TALL THIN FORMAL SUN (6)**
 ITALIAN CYPRESS (*CUPRESSUS SEMPERVIRENS*, TINY TOWER)
 HINOKI CYPRESS (*CHAMAECYPARIS OBTUSA*)
- **DECIDUOUS, SHORT <30 FT, SUN/SHADE (19)**
 PACIFIC DOGWOOD, (*CORNUS NUTALLII*)
 FLOWERING DOGWOOD, (*CORNUS SPP*)
 GOLDEN RAINDROP CRABAPPLE (*MALUS FUSCA*)
 CASCARA (*RHAMNUS PURSHIANA*)
 DOUGLAS HAWTHORN (*CRATAGUS DOUGLASII*)
- **DECIDUOUS, TALL >40 FT SUN/SHADE (8) RED CUTLEAF RED ALDER (*ALNUS RUBRA 'CUTLEAF'*)**
 DOUGLAS MAPLE (*ACER GLABRUM*)
 PACIFIC SUNSET MAPLE (*ACER 'WARRENRED'*)
 OREGON ASH (*FRAXINUS LATIFOLIA*)
 OREGON OAK (*QUERCUS GARRYANA*)
- **CONIFER, SLOW GROWING/SHORT (5)**
 MOUNTAIN HEMLOCK (*TSUGA MERTENSIANA*)
 PACIFIC YEW (*TAXUS BREVIFOLIA*)
 WESTERN JUNIPER (*JUNIPERUS OCCIDENTALIS*)
 KOREAN FIR (*ABIES KOREANA 'SILBERLOCKE'*)
- **LANDSCAPE TREE, TALL, 40FT FULL CANOPY (4)**
 JAPANESE MAPLE (*ACER PALMATUM*)
- **LANDSCAPE TREE THIN, SUN/SHADE (3-5)**
 ALASKAN YELLOW CEDAR (*CUPRESSUS NOOT-KANTENSES* GREEN POINT, VANDENAKKER)
 GIAN T WEEPING SEQUOIA (*SEQUIADENDRON GIGANTEUM PENDULA*)